

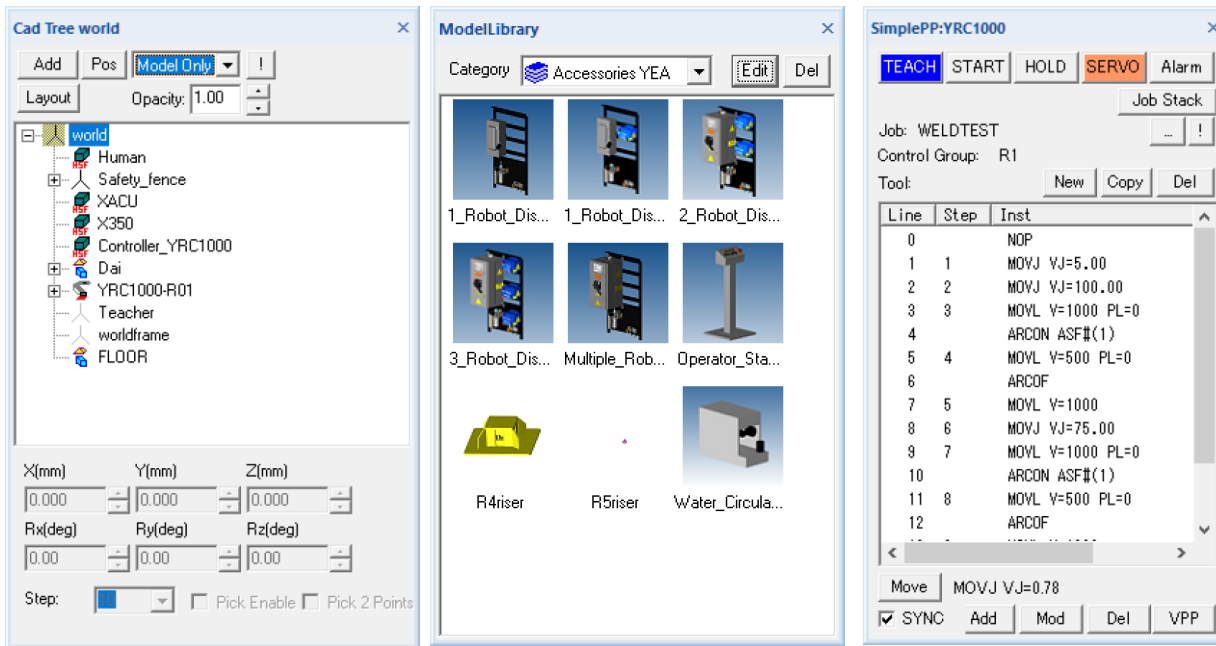
How To Fix MotoSim When Panels or Pendant are Missing

Introduction

Sometimes a user can suddenly be unable to access different tool panels in MotoSim or cannot see the virtual pendent or pendent keypad. It can be especially frustrating when deadlines are imminent. Below are solutions to these issues.

How To Fix Missing Tool Panels

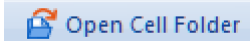
MotoSim has many panel windows that can sometimes be lost onscreen. The CAD tree, Model Library, the Simple Pendant are among a few.



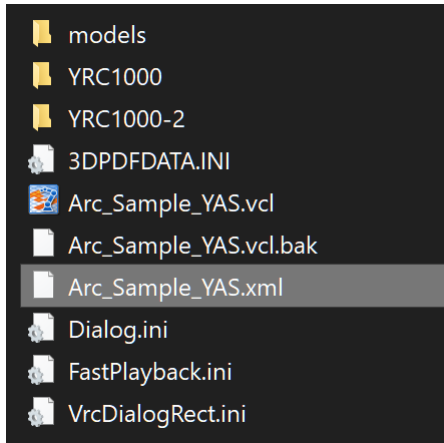
If any panel window is not appearing onscreen any longer, the best method to remedy the issue is to delete the *.xml file in the simulation folder

This document captures ideas, experiences, and informal recommendations from the Yaskawa Partner Support team. It is meant to augment – not supersede manuals or documentation from motoman.com. Please contact the Partner Support team at partnersupport@motoman.com for updates or clarification.

1. In Motosim, on the **HOME** tab, select **Open Cell Folder**



2. Delete the *.xml then restart the simulation...all tool panels should be visible.



Please Note that deleting the *.xml will also removes the quick action toolbar icons (if any)



This document captures ideas, experiences, and informal recommendations from the Yaskawa Partner Support team. It is meant to augment – not supersede manuals or documentation from motoman.com. Please contact the Partner Support team at partnersupport@motoman.com for updates or clarification.

How To Fix a Missing Virtual Pendant

If the Virtual Pendant is missing, simply select the icon



Show

and the pendant will reappear.

If the Virtual Pendant is still missing, then hold down the **CTRL** key while selecting the icon



Show

and the pendant will reappear.

If the pendant keypad does not display, then hold down the **CTRL** key on the keyboard while selecting the keypad icon on the virtual pendant



This document captures ideas, experiences, and informal recommendations from the Yaskawa Partner Support team. It is meant to augment – not supersede manuals or documentation from motoman.com. Please contact the Partner Support team at partnersupport@motoman.com for updates or clarification.

The keypad will snap under the pendant...as seen below.

